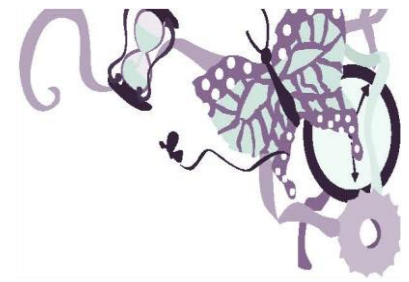


Kansas Lifespan Respite Coalition



Meeting Minutes – August 13, 2013

Host: Disability Rights Center of Kansas

Participants: Monica Cissell – Central Plains AAA, Michele Dillon – Jayhawk AAA, Gina Ervay - KLRC/ROCKO, Steve Gieber – Kansas Council on Developmental Disabilities, Linsey Norton – Alzheimer’s Association, Laura Owens – Kansas Department for Aging and Disability Services,

Upcoming 2013 Meeting Dates (11am-12pm): Oct. 8th, Dec. 10th

Multi-State Innovation Collaborative:

- Kansas will be partnering on a multi-state innovation grant proposal to the Centers for Medicare and Medicaid Services to improve state-wide access to respite care. Approximately 10-12 states are expected to participate. Some of the other states that may participate include: Nebraska, Tennessee, Alabama, Arizona, Colorado, Massachusetts, Ohio, New Hampshire, Vermont, Rhode Island, and Connecticut.
- One aspect of the grant will provide an 8 hour training curriculum for respite volunteers called REST or “Respite Education and Support Tools”. The training was developed by Marklund, a non-profit organization in Illinois that provides residential and day services as well as educational opportunities to infants, children, teens and adults with special healthcare needs. The REST training is a train the trainer model, and can be customized to fit specific populations whether the focus may be aging related needs, disabilities, or other special healthcare needs. Currently in Kansas, Gina Ervay (Wichita) and Erin Pittenger (Manhattan) have completed the train the trainer course.
- Currently the grant proposal is slated to be submitted around the end of August. Between now and then, Kansas needs to consider the best ways to possibly implement the training program. People who become program trainers can receive the train the trainer sessions at no cost. All materials for the volunteers they train will also be at no cost. However, at this time, no reimbursement is planned for the time trainers spend training volunteers. Nebraska is talking to Marklund about including a reimbursement for time spent training, but no decision has been made yet. That request is mostly prompted due to their plan to utilize state employees to train volunteers.
- Some examples of how states are looking to implement the training include:
 - Tennessee plans to make the training a part of a required internship for a degree in sociology. After the intern takes the training, they will then be required to provide respite services for a period of time as a part of their internship.
 - Nebraska is looking to implement the training through their Department of Human Services at the state level. A teleconference call on August 20, 2013 with Nebraska is planned to learn more about how the state will connect the training to volunteers.
 - Illinois is looking at working with the Area Agencies on Aging, case managers, and churches.
 - One state is looking into how to involve Job Corps.

- In Kansas, some initial partner ideas include:
 - Ministerial Alliance via Interfaith Ministries
 - Catholic Diocese / Catholic Charities
 - United Methodist Conference – Kansas & Nebraska region
 - Kansas Nebraska Southern Baptist Convention
 - Jayhawk AAA Faith in Action initiative
 - RSVP
 - VA

- There is an unanswered question as to how organizations/agencies like the AAA's, Alzheimer's Association, Families Together could participate considering the liability issues. Faith-based communities seem a natural fit not only because of their volunteer base, but also because of the liability insurance that is most likely already in place. *Gina Ervay will follow up on how liability issues are addressed in other states.*

- Michele Dillon with Jayhawk AAA is working on a Faith in Action initiative to get respite volunteers. She has mailed letters to churches to explore their interest and is following up with other Faith in Action programs for more information. Difficulty in getting churches to respond has been experienced thus far. It has been tricky determining the right person within the churches to connect with.

- Monica Cissell with the Central Plains AAA mentioned that the various RSVP programs across the state would have the ability to put announcements about the training information in their newsletters or email blasts. Jennifer Humphrey with Central Plains AAA is the coordinator for the Wichita area RSVP program, and she regularly meets with the United Way. While the different RSVP programs have different focuses of which caregiving may or may not be included, they can at least help share the information about volunteer respite training with their networks. *Monica will get the contact information for administration over all the RSVP programs.*

- Agencies or organizations that administer the RSVP programs purchase insurance for volunteers from FIMA Insurance Company. The insurance is a benefit to volunteers and covers them for personal injury or vehicle accident while performing volunteer responsibilities. It is not believed to cover any injury to another person being served by a volunteer. The insurance is more affordable as it covers the average number of volunteers working per day rather than the total number of volunteers in the volunteer pool.

- Linsey Norton with the Alzheimer's Association mentioned that they have volunteers across the state which they can inform about the volunteer respite training via newsletter, E-News and an email distribution list. The Alzheimer's Association wouldn't be able to provide the volunteer training due to liability issues, but they could provide families with a list of churches that have volunteers.

Registry:

- A second component of the innovation grant to CMS is to implement a direct care worker registry called Rewarding Work Resources.

- For anyone who is interested in previewing the database, contact Gina Ervay at 316-218-9363 or gervay@rockoinc.org for a system sign on.

- The long term plan to sustain the Rewarding Work registry in Kansas is to partner with the managed care organizations. The managed care organizations would commit to helping with data collection and grant evaluation procedures. Their involvement would include:
 - 1) Assistance with identifying the members who receive attendant care or respite care and live with their caregiver.
 - 2) Collaboration on sending caregivers a stress level test prior to starting the project and then later as they have had time to access direct care workers from the registry. (This will help measure if stress is being positively impacted.)
 - 3) Assistance with identifying PMPM health care costs for consumers and their caregivers if both are on the healthcare plan. (This would be used to analyze the level of impact access to skilled respite care has on reducing health care costs for both consumers and caregivers, as often times caregivers without adequate help will neglect their own care until it passes the point of being serious.)
 - 4) Collaboration with care managers to let members know about the direct care worker registry. (The grant will also pay for a public awareness campaign.)
- At the end of the three year period, if there is sufficient evidence to prove access to respite care reduces health care costs, then partners will have the option to share in ongoing maintenance costs of the database. That cost is estimated to be between \$30,000 and \$75,000 per year to be shared by interested partners (varies depending on customization desired). National statistics currently reflect an average cost savings of approximately \$70,000 per year per individual that remains in the home with community based support rather than resorting to out-of-home placement.
- Sunflower is the first managed care organization to partner on the grant proposal. Discussions are ongoing with United and Amerigroup.

Training & Credentialing Program Development:

- The KLRC will be talking with Independence Community College on August 28th about the possibility of them taking the lead on developing the training and credentialing program where Butler Community College left off. The lead college will also be responsible for applying to the Kansas Board of Regents for approval of the program aligning with an Associate's Degree.

Updates and Announcements from Member Agencies/Organizations:

- The Alzheimer's Association is moving their Wichita office at the end of September. They will be located across from the American Red Cross on Douglas Avenue.

The next Kansas Lifespan Respite Coalition teleconference will be October 8, 2013 at 11:00 am. The Disability Rights Center of Kansas will host the call.

Adjourned at 11:55 am.